

Anti-DUT Rabbit Monoclonal Antibody
Catalog # ABO16679**Specification**

Anti-DUT Rabbit Monoclonal Antibody - Product Information

Application	WB, FC
Primary Accession	P33316
Host	Rabbit
Isotype	Rabbit IgG
Reactivity	Human
Clonality	Monoclonal
Format	Liquid

Description

Anti-DUT Rabbit Monoclonal Antibody . Tested in WB, ICC/IF, Flow Cytometry applications. This antibody reacts with Human.

Anti-DUT Rabbit Monoclonal Antibody - Additional Information

Gene ID 1854

Other Names

Deoxyuridine 5'-triphosphate nucleotidohydrolase, mitochondrial, dUTPase, 3.6.1.23, dUTP pyrophosphatase, DUT

Application Details

WB 1:500-1:2000
ICC/IF 1:50-1:200
FC 1:50

Contents

Rabbit IgG in phosphate buffered saline, pH 7.4, 150mM NaCl, 0.02% sodium azide and 50% glycerol, 0.4-0.5mg/ml BSA.

Immunogen

A synthesized peptide derived from human DUT

Purification

Affinity-chromatography

Storage

Store at -20°C for one year. For short term storage and frequent use, store at 4°C for up to one month. Avoid repeated freeze-thaw cycles.

Anti-DUT Rabbit Monoclonal Antibody - Protein Information

Name DUT

Function

Catalyzes the cleavage of 2'-deoxyuridine 5'-triphosphate (dUTP) into 2'-deoxyuridine

5'-monophosphate (dUMP) and inorganic pyrophosphate and through its action efficiently prevents uracil misincorporation into DNA and at the same time provides dUMP, the substrate for de novo thymidylate biosynthesis (PubMed:17880943, PubMed:8631816, PubMed:8805593). Inhibits peroxisome proliferator- activated receptor (PPAR) activity by binding of its N-terminal to PPAR, preventing the latter's dimerization with retinoid X receptor (By similarity). Essential for embryonic development (By similarity).

Cellular Location

[Isoform 2]: Nucleus

Tissue Location

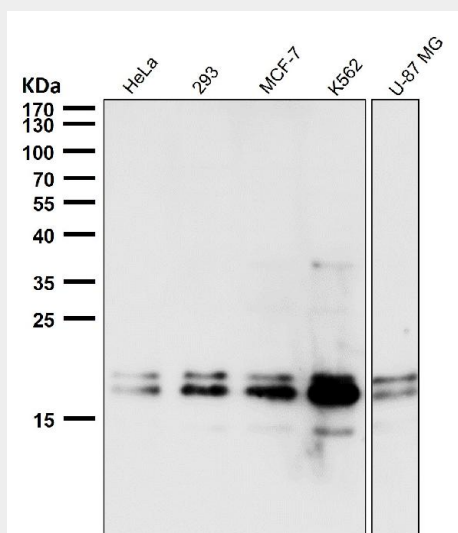
Found in a variety of tissues. Isoform 3 expression is constitutive, while isoform 2 expression correlates with the onset of DNA replication (at protein level). Isoform 2 degradation coincides with the cessation of nuclear DNA replication (at protein level)

Anti-DUT Rabbit Monoclonal Antibody - Protocols

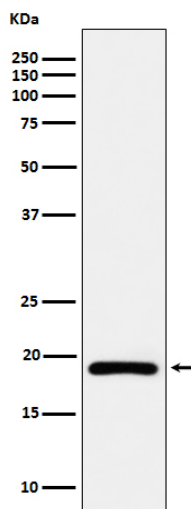
Provided below are standard protocols that you may find useful for product applications.

- [Western Blot](#)
- [Blocking Peptides](#)
- [Dot Blot](#)
- [Immunohistochemistry](#)
- [Immunofluorescence](#)
- [Immunoprecipitation](#)
- [Flow Cytometry](#)
- [Cell Culture](#)

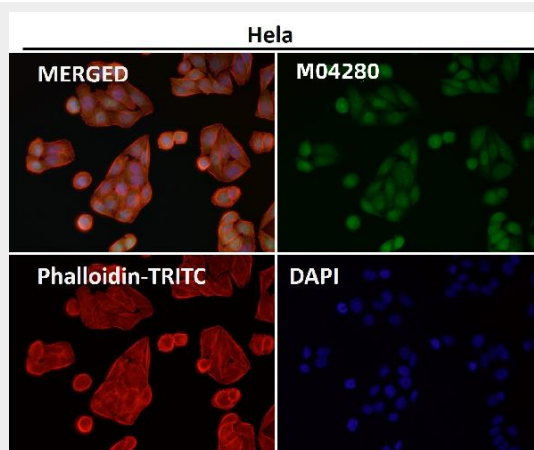
Anti-DUT Rabbit Monoclonal Antibody - Images



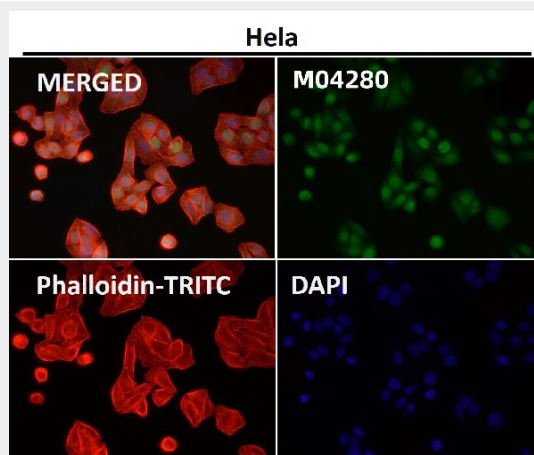
All lanes use the Antibody at 1:5K dilution for 1 hour at room temperature.



Western blot analysis of DUT expression in Ramos cell lysate.



Immunofluorescent analysis using the Antibody at 1:50 dilution.



Immunofluorescent analysis using the Antibody at 1:150 dilution.